

Flexeserve Zone 2 Tier - Countertop UK~ROW



For full details on how to operate this equipment safely, please refer to the operation manual.



WARNING

In an emergency, switch off the appliance and isolate fully from the mains supply.



CAUTION

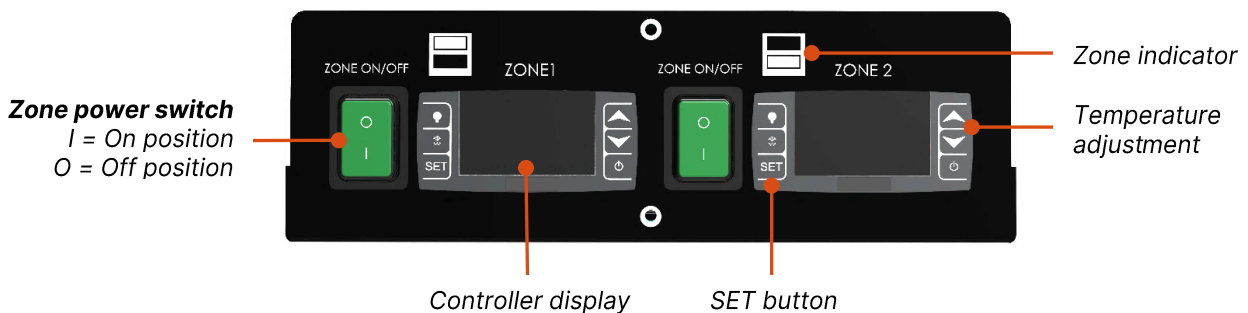
The surface of the zones will become hot, reaching temperatures above 70°C (158°F).

Operation

Individual Zones - Heating

Each of the model variants are supplied with one set of controls for each zone. The controls are located behind the valance panel at the base of the equipment.

Set the zone power switch to the 'ON' position and the controller display will illuminate. The display will show the current temperature. The equipment will begin to heat and reach the established temperature set-point automatically, generally 85°C (185°F). Where multiple zones are required, select and set the appropriate zone power switches to the 'ON' position separately. Set the appropriate zone power switches to the 'OFF' position to switch zones off individually.



Adjusting Temperatures

To view the set temperature of each zone, press the 'SET' button for half a second, and then release. To change the temperature of an individual zone, press and hold the 'SET' button until '°C' flashes on the display. Press the temperature adjustment buttons to increase (▲) or decrease (▼) the temperature. Press the 'SET' button again to input the new set point.

Display and Merchandising

Do not obstruct the fan(s) at the rear of each zone as this can cause the built-in safety shut-off to activate and stop the unit from working.



Troubleshooting

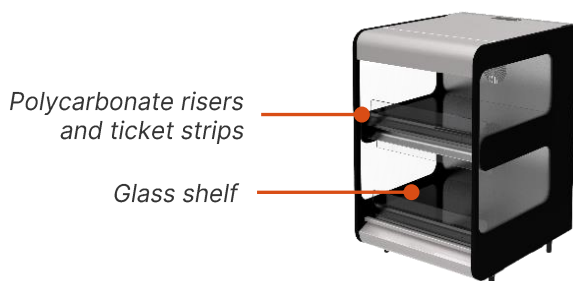
Some faults must only be investigated by a trained and qualified Engineer. For assistance with troubleshooting this equipment, please refer to the operation manual or contact Customer Support.

Fault	Potential Cause	Solution
Unit is not operating.	No power.	Check that the switches on Flexeserve Zone are switched on.
		Check that the unit is plugged into a working socket.
		After the above, contact Customer Support.
Shelf is not operating at temperature.	Parts are missing.	Ensure that risers and air deflectors are in place.
	Store conditions.	Refer to the 'Specifications' page of this Operation Manual for the ambient conditions required.
	Set point.	Ensure that the unit is set to the correct temperature.
	Over-temperature thermostat has operated causing a blank display.	Contact Customer Support.
	Fan is spinning but cold air is blowing.	Contact Customer Support.
Display shows 'P1', not the temperature.	Probe fault on the zone.	Check to see if any plugs have disconnected from the control box.
		Contact Customer Support.
Lights are not working.	Light unit has failed.	Contact Customer Support.

Daily Cleaning

For full details on how to clean this equipment, please refer to the operation manual.

The polycarbonate risers and ticket strips can be removed from the unit for cleaning.



Once the front polycarbonate risers and ticket strips are removed, crumbs and debris can be swept forwards and out of each zone. Glass shelves, inner side wells, lamp diffuser glass and external surfaces can be cleaned using non-abrasive cleaning products.

